



सीएसआईआर-चौथा पैराडाइम संस्थान  
**CSIR-Fourth Paradigm Institute**  
( पूर्व सीएसआईआर-सीमैक्स / Formerly CSIR-CMMACS )  
Ministry of Science & Technology, Govt. of India  
एनएएल बेलूर कैम्पस, बेंगलूर  
**NAL Belur Campus, Bangalore-560 037**



## INVITATION FOR BIDS/NIT

Enquiry No. :

4PI/PUR/2K22/036

Dated 20.09.2022

CSIR- Fourth Paradigm Institute(CSIR-4PI), formerly CSIR-CMMACS, BENGALURU, India, is one of the premier laboratories under Council of Scientific and Industrial Research, an autonomous body under Department of Scientific and Industrial Research (Government of India), New Delhi. CSIR-4PI is a Science and Knowledge based Research and Development Organization.

The HEAD, CSIR-4PI invites online quotation/Bids for procurement of the following item(s)

Sl. No.	Description of Item	Unit	Quantity
1	Supply and Erection of Modular Workstation with Storage Units as per ANNEXURE - I, ANNEXURE - II, Drawings as per ANNEXURE - III and Buyback as per ANNEXURE - IV	Lot	1

Single	YES
Bid Security (EMD) (in INR)	NIL

- 1 The Prospective bidders are requested to refer to the General Terms & Conditions of the tender.
- 2 The Bidder shall comply with the terms and conditions of the tender, failing which the offer liable to be rejected.
- 3 The HEAD, CSIR- Fourth Paradigm Institute, Bengaluru reserves the right to accept any or all the tenders either in part or in full or to split the order without assigning any reasons there for.

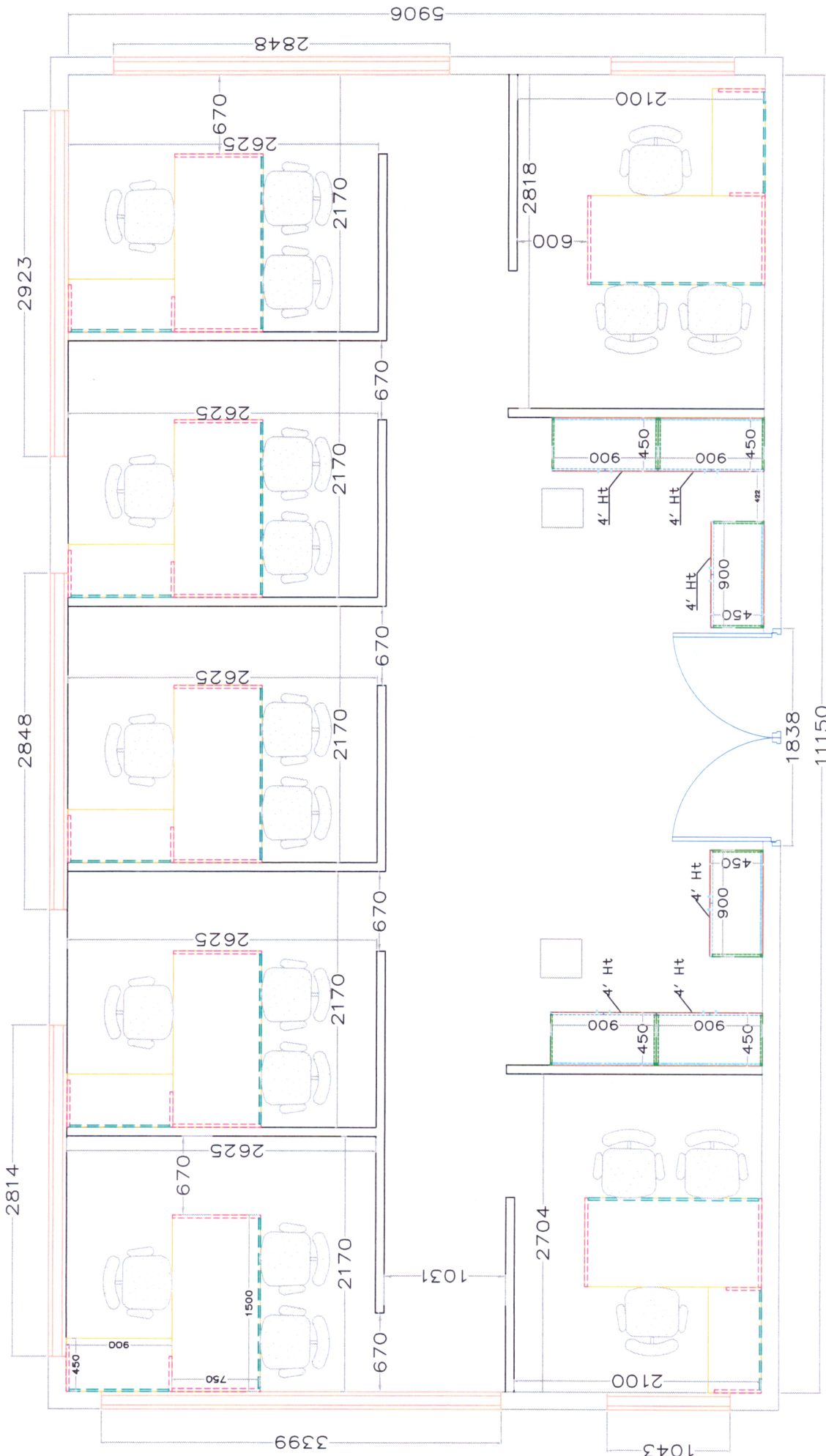
Yours faithfully,  
SD  
Vikash Chandra Mishra  
Stores & Purchase Officer

<b>ANNEXURE-I</b>			
SI.NO	DESCRIPTION	UNIT	QTY
1	<p><b>MANAGER WORKSTATION</b>                      Main Table Size :1500 mm W x750 mm D x 750mm H                      Side Table Size : 900 mm W x 450 mm D x 750 mm H                      Bottom Structure Legs Made Up of 50mm Square M.S Tube                      Cross Members made of 25 X 50mm Steel Tube                      8 mm X 300mm Sandwich Laquered glass separator above the table                      300mm bottom frame with electrical and network cutout Finish - Powder Coated                      One Wire Manager per Workstation with Metal modesty                      Table top - 25mm thick Engg Wood PLPB with straight edge bound.</p>	Nos	13
2	<p><b>STORAGE UNIT</b>                      Size : 900 mm W x 450mm D x 1200mm H                      18mm thick with Openable Drawers, Shutters                      Individual locking system. Top - 18mm thick Engg Wood <b>PLPB</b> with straight Edge banded                      Rear- 9mm Pre Lam</p>	Nos	16
3	<p><b>EXECUTIVE CHAIR MEDIUM BACK</b>                      Med back with single frame + lumbar multi contact back support                      Revolving, Tilting, wheel castors, gas lift, PU Special armrest                      Standard Mesh fabric back rest and fabric with cushion seat PU black wheel support.</p>	Nos	26
4	<p><b>HIGH BACK CHAIR FOR MANAGER CABIN</b>                      High back with single frame with lumbar multi contact back support                      Revolving, Tilting, wheel castors, gas lift, PU Special armrest                      Standard Mesh fabric back rest and HQ fabric with cushion seat MS Chrome wheel support.</p>	Nos	13
5	<p><b>PARTITION ( GYPSUM + PLY )</b>                      Providing &amp; fixing partition wall of 100mm thk. Made of <b>12.5mm thk Gyp Board and BWR Ply Board</b> on either side of the GI frame. With metal stud ceiling channel &amp; floor channel of 50mm.The <b>Acoustic</b> grade gypsum partition shall be taken 150mm above the false ceiling lvl &amp; the frame work shall be taken upto the ceiling level of the roof or to the beam bottom.</p>	SFt	918
6	<p><b>FALSE CEILING - ( GYPSUM BOARD BASE )</b>                      Providing &amp; fixing of ULTRA suspended ceiling which includes G.I perimeter channels of size 0.55mm thick having one flange of 20mm &amp; another flange of 30mm &amp; a web of 27mm along with perimeter of ceiling. Ceiling section of 0.55mm thickness having knurled web of 51.5mm &amp; two flanges of 26mm each with lips of 10.5mm are then fixed to the intermediate channel with the help of connecting clip &amp; in direction perpendicular to the intermediate channel at 457mm centers.                      12.5mm thk. tapered edge gyp board of Acoustic grade with moisture resistant (MR) INDIA GYPSUM / AMRSTRONG make is screw fixed to the ceiling section with 25mm dry wall screws at 230mm centers. Fixing glass wool above ceiling for acoustic.</p>	SFt	650

PO No 4PI/PUR/2K22/036

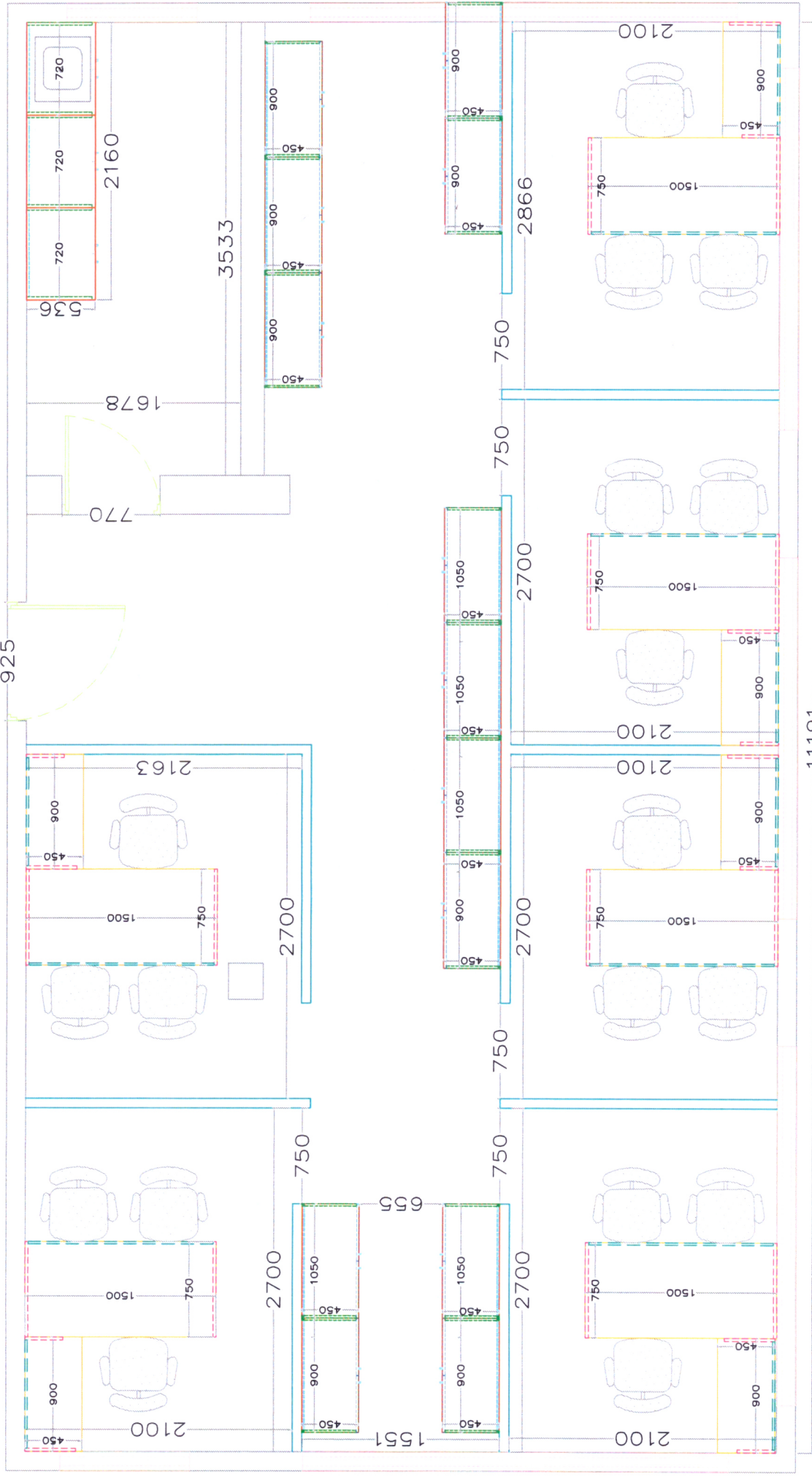
7	<b>FALSE CEILING - GRID TILE BASE (600 MM X 600 MM)</b> Providing & Fixing of Suspended Ceiling System with ceiling tiles of Gypsum board with [square edge] EDGE TILES WITH XL 24 mm EXPOSED GRID. The grid with XL 24 mm wide T - section flanges color white having rotary stitching on all Silhouette Amrstrong sections	SFt	1150
8	<b>EMULSION PAINTING</b> <b>Interior Painting (Walls + False Ceiling + Gypsum Partition)</b> Surface Cleaning + Sand Cleaning 2 Finish coats on top of approved Color <b>Type : Emulsion (VoC Free)</b>	SFt	6900
9	<b>BEEDING</b> AL profile Above 4' Gypsum Partition Panel	Rft	270
10	<b>WOODEN SKIRTING</b> Perfect looking and always clean surface of skirting Top surface is resistant to impacts. Special SPC skirting with waterproof core is perfectly coated with scratch resistant varnish that ensures easy maintaining and cleaning.	RFt	350

ANNEXUKE - III



Basement

ANNEXURE - III



First Floor

**ANNEXURE-IV**

**(Buy Back)**

**First Floor**

<b>Sl. No</b>	<b>Description</b>	<b>Qty</b>
1	classic collection - low back chair with fixed pci arms ,abs back, nylon base, active back tilt, pneumatic lift andupholstered with non deformable premoulded foamtransteel standard fabric - ccf- 2661 (IP-3-2661)	1
2	hp dx 2280 desktop computers with linux os- intel pentium d 915 proce4ssor , 945g chipset- 2 gb memory , 160 gb hdd, 1.44 mb fdd- combo drive 16 x 10x 40 cd r/w 12x dvd read- 104 keys keyboard, optical mouse- hp 19" tft colour monitor etc specifications as permisc volume (MSC-XXVI-5682)	1
3	classic collection - low back chair with fixed pci arms ,abs back, nylon base, active back tilt, pneumatic lift andupholstered with non deformable premoulded foamtransteel standard fabric - ccf- 2645 (IP-3-2645)	1
4	chair - steel, executive, medium back, water fall seat withnon-deformable pre-moulded foam, fixed pu arm rests, revolving, adjustable height,variable tension adjuster,synchronoustilt mechanism with lockable facility, mounted on five prongbase with twin roller castor wheels, sc 5382 (IM-55-5690)	1
5	classic collection - low back chair with fixed pci arms ,abs back, nylon base, active back tilt, pneumatic lift andupholstered with non deformable premoulded foamtransteel standard fabric - ccf- 2656 (IP-3-2656)	1
6	chair - steel, executive, medium back, water fall seat withnon-deformable pre-moulded foam, fixed pu arm rests, revolving, adjustable height,variable tension adjuster,synchronoustilt mechanism with lockable facility, mounted on five prongbase with twin roller castor wheels, sc 5377 (IM-55-5685)	1
7	classic collection - low back chair with fixed pci arms ,abs back, nylon base, active back tilt, pneumatic lift andupholstered with non deformable premoulded foamtransteel standard fabric - ccf- 2654 (IP-3-2654)	1
8	classic collection - low back chair with fixed pci arms ,abs back, nylon base, active back tilt, pneumatic lift andupholstered with non deformable premoulded foamtransteel standard fabric - ccf- 2647 (IP-3-2647)	1
9	chair - steel, executive, medium back, water fall seat withnon-deformable pre-moulded foam, fixed pu arm rests, revolving, adjustable height,variable tension adjuster,synchronoustilt mechanism with lockable facility, mounted on five prongbase with twin roller castor wheels, sc 5380 (IM-55-5688)	1

10	chair - steel, executive, medium back, water fall seat withnon-deformable pre-moulded foam, fixed pu arm rests, revolving, adjustable height,variable tension adjuster,synchronoustilt mechanism with lockable facility, mounted on five prongbase with twin roller castor wheels, sc 5383 (IM-55-5691)	1
11	chair - steel, executive, medium back, water fall seat withnon-deformable pre-moulded foam, fixed pu arm rests, revolving, adjustable height,variable tension adjuster,synchronoustilt mechanism with lockable facility, mounted on five prongbase with twin roller castor wheels, sc 5381 (IM-55-5689)	1
12	chair- revolving, high back, model- ch999asx. (CM-I-17-74)	1
13	chair - wooden peacock with arm rests and cloth upholstery,cw 731 (IJ-74-766)	1
14	chair - wooden peacock with arm rests and cloth upholstery,cw 729 (IJ-74-764)	1
15	storage unit - side, 2'8" x 2'6" (IJ-169-681)	1
16	storage unit - side, 2'8" x 2'6" (IJ-169-684)	1
17	storage unit - side, 2'8" x 2'6" (IJ-169-687)	1
18	table - executive, 5' x 2.5', t 702 (IF-22-702)	1
19	table - executive, 5' x 2.5', t 703 (IF-22-703)	1
20	table - executive, 5' x 2.5', t 705(IF-22-705)	1
21	table - executive, 4.5' x 2.5', t 707 (IF-22-707)	1
22	table - executive, 4.5' x 2.5', t 709 (IF-22-709)	1
23	storage unit - side, 2'8" x 2'6" (IJ-169-683)	1
24	storage unit - side, 2'8" x 2'6" (IJ-169-685)	1
25	storage unit - side, 2'8" x 2'6" (IJ-169-686)	1
26	storage unit - side, 2'8" x 2'6" (IJ-169-688)	1
27	storage unit - main, 4' x 7' (IJ-170-689)	1
28	storage unit - main, 7' x 7' (IJ-170-690)	1
29	table - executive, 5' x 2.5', t 104 (IF-22-704)	1
30	table - executive, 5' x 2.5', t 706 (IF-22-706)	1
31	table - executive, 4.5' x 2.5', t 708 (IF-22-708)	1
32	table steel tubular 54"x30"x38" (st-1700) ( IF-65-1716)	1

**Basement**

<b>Sl. No</b>	<b>Description</b>	<b>Qty</b>
1	table 'khira' computer modulu 80x24cm (ccf-210) (IF-159-210)	1
2	computer modular furniture comprising of 3 drawers, ccf 1318 (IH-125-1318)	1
3	computer modular furniture comprising of 3 drawers, ccf 1319 (IH-125-1319)	1
4	table computer 'khira' with cable conduit 80cmx80cmx24cmh (ccf-206) (IF-159-206)	1
5	computer modular furniture comprising of 3 drawers, ccf 1320 (IH-125-1320)	1
6	table (computer) ccf-591 (IG-155-591)	1